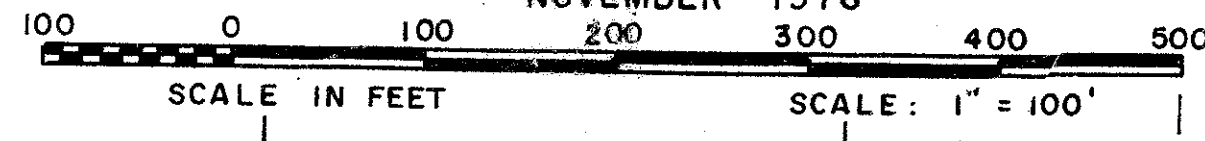


PINEWOOD EAST NO. 2 OF WELLINGTON

P.U.D.
IN PART OF SECTIONS 2, 3 & 10, TWP. 44 S., RGE. 41 E.
PALM BEACH COUNTY, FLORIDA
IN 5 SHEETS SHEET NO. 2

GEE & JENSON
ENGINEERS-ARCHITECTS-PLANNERS, INC.
WEST PALM BEACH, FLORIDA
NOVEMBER 1976



PINEWOOD EAST P.B. 32 PGS. 96-98, incl.
LIMITS OF PLAT N. 89° 59' 58.4" E. 2781.52'

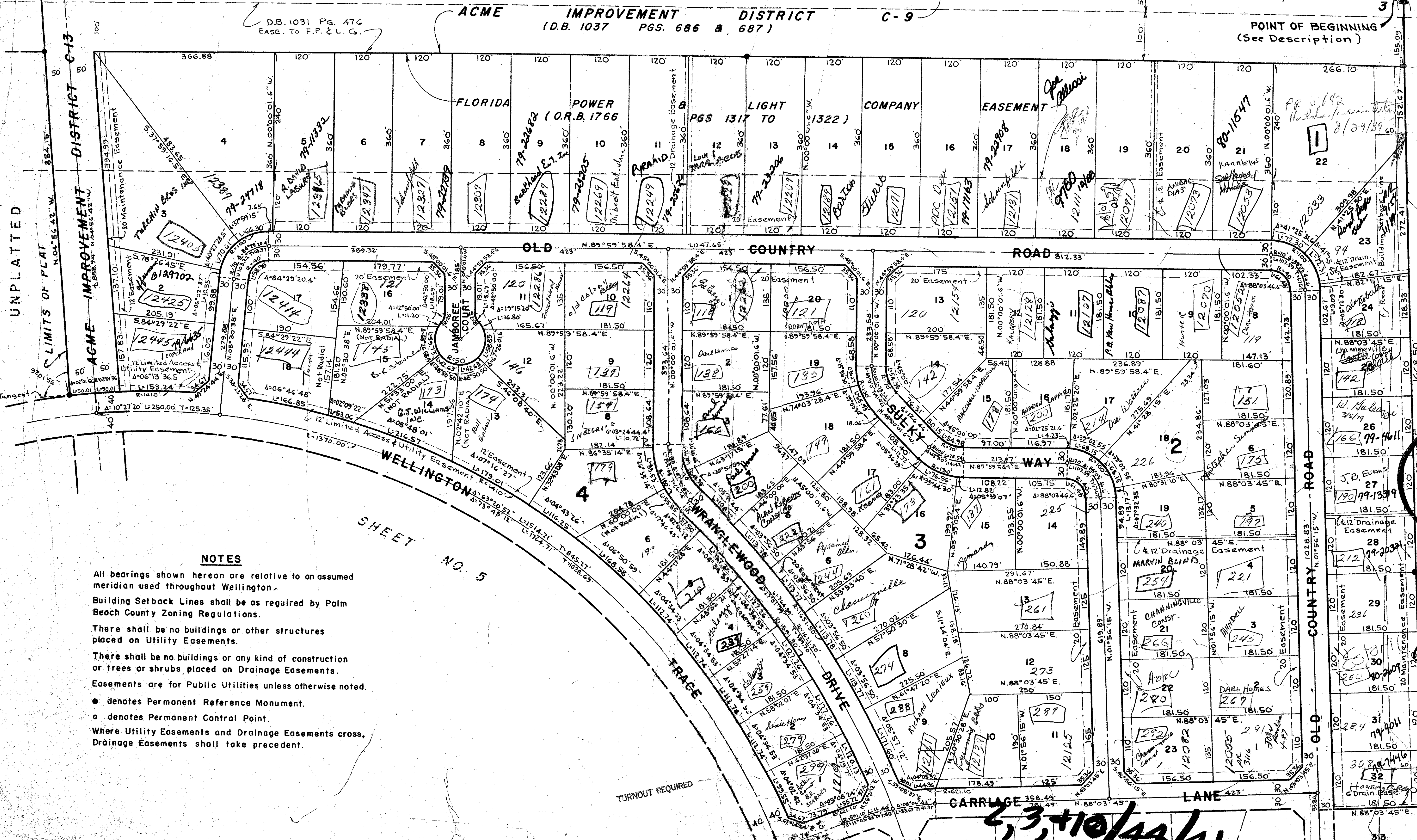
STATE OF FLORIDA
COUNTY OF PALM BEACH
This Plat was filed for record at _____ M.
this _____ day of _____, 197____
and duly recorded in Plat Book No. _____
on page _____
By JOHN B. DUNKLE, Clerk Circuit Court
D.C.

97

UNPLATTED

TWP. 43 S.
TWP. 44 S.

POINT OF BEGINNING
(See Description)



NOTES

- All bearings shown hereon are relative to an assumed meridian used throughout Wellington.
- Building Setback Lines shall be as required by Palm Beach County Zoning Regulations.
- There shall be no buildings or other structures placed on Utility Easements.
- There shall be no buildings or any kind of construction or trees or shrubs placed on Drainage Easements.
- Easements are for Public Utilities unless otherwise noted.
- denotes Permanent Reference Monument.
- denotes Permanent Control Point.
- Where Utility Easements and Drainage Easements cross, Drainage Easements shall take precedent.

SHEET NO. 5

62

339-051

9133

PINEWOOD EAST NO. 2

SHEET NO. 5